

## Remote access to General VetSchool Applications and Links using the Horizon Application

Current Services provided by the General access for the Vet School. This is open to all faculty and staff of the LSU School of Veterinary Medicine.

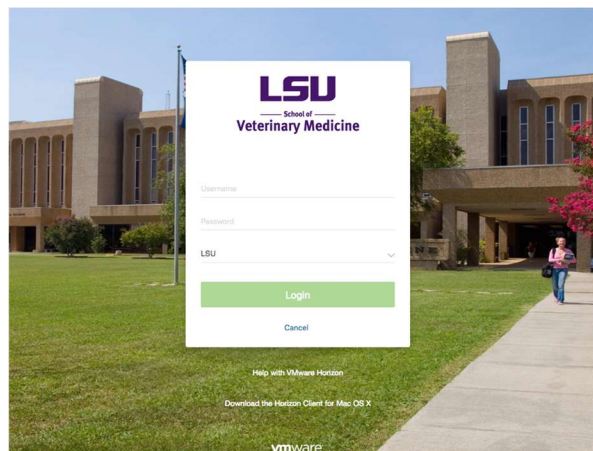
Links	Software
LSU COVID-19 Information	Box
Workday	Cornerstone
GROK	USALims
myLSU	LSU Mainframe Access
LSU Libraries	Word 2016
	Outlook 2016
	Excel 2016
	Endnote X9
	Google Chrome
	Tableau Reader

To add a software or link to the General desktop, please send that request to [vmed-helpdesk@lsu.edu](mailto:vmed-helpdesk@lsu.edu).

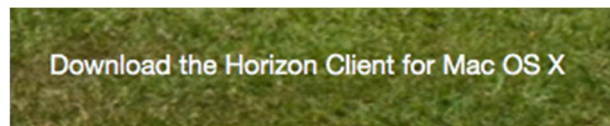
Remember, any internal VetMed mapped drive that you have access to will show up under File Manager - > This PC.

### How to access remote VetMED services

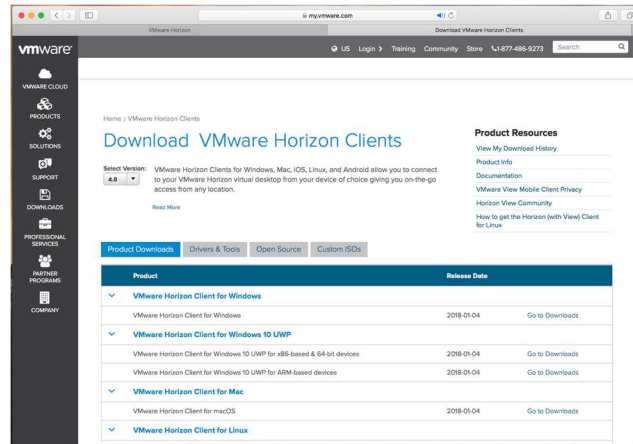
1. Connect to <https://vmed-connect.lsu.edu>



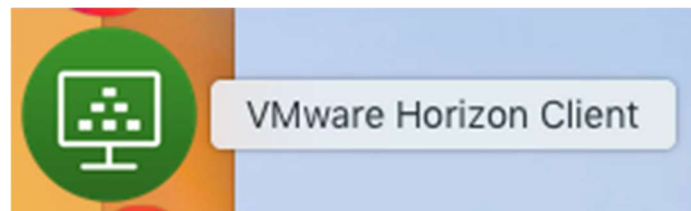
2. Select Download Horizon Client for Mac OS X or Windows




3. This will bring you to the VMWare website. Select the appropriate version for your operating system and click "Go to downloads"



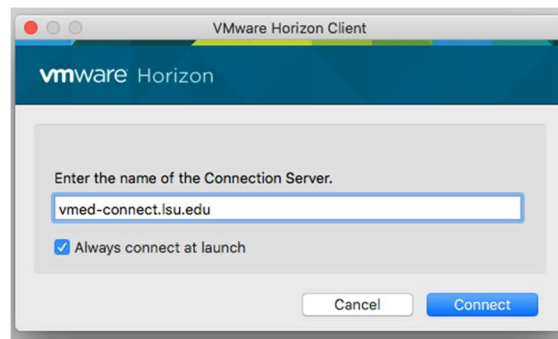
4. Once downloaded you will be asked to install the software. Follow the procedures for the operating system that you are currently running.
5. Once the system is installed, the following icon will become available to you in the your Applications directory (MAC) or Start Menu (Windows).



6. Launch the VMWare Horizon Client
7. Once this screen you will be required to tell the VMWare Horizon Client which server to connect to.

8. Click the + icon, 

9. Once the screen is open, type in the following address: vmed-connect.lsu.edu



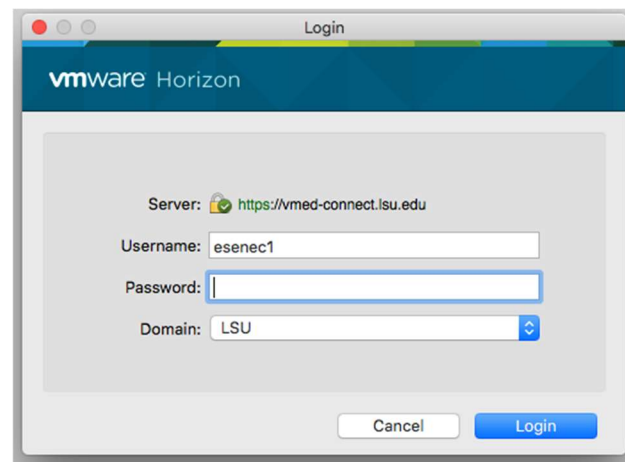
10. Check the "Always connect at launch"
11. Press Connect

12. The following icon will appear.



13. You have now setup the system to always connect to the VetMed Connection Server. The next step is to double click on the vmed-connect.lsu.edu icon to access your desktop or applications.

14. You will be prompted for your PAWSID and password. Select the domain LSU. Click Login



15. Once logged in you will see the desktops and applications that are assigned to you. To access the general desktop created for remote access, simply double click on the icon labeled General.

**Note, the installation portion of this guide only needs to be done once. Once the software is installed, you may simply launch it and start at step 6.**